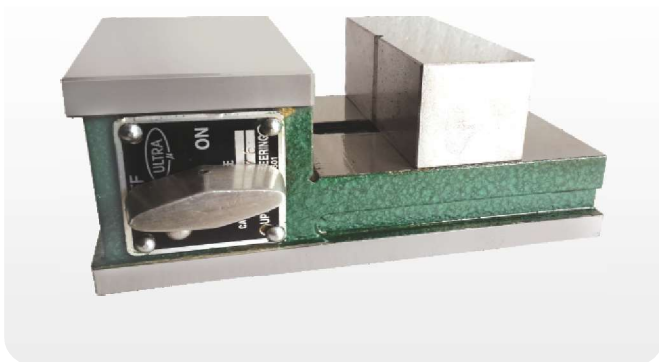


17 SERIES **UL - 204**

"ULTRA" BRAND MAGNETIC VICE

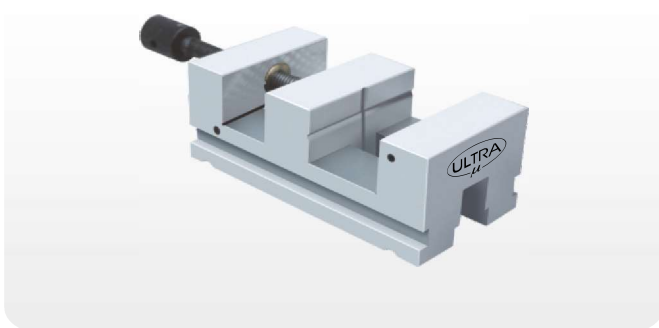


- Used for holding flat squared & round jobs.
- Accuracy for Flatness, Squareness & parallelism within 0.015mm.
- "V" on moveable jaw facilitates end face grinding.
- Job is clamped only by resting between fixed & moveable jaw and operating On-Off switch.
- ON-OFF facility by allen key.

Cat No.	Size (mm)	Jaw-Holding Area (mm ²)
UL-20401	110 x 180 x 75	100 x 65
UL-20402	160 x 225 x 90	150 x 75

18 SERIES **UL - 311**

"ULTRA" BRAND HARDENED AND GROUND PRECISION GRINDING VICE Screw Type



- Used for holding the jobs, right angle grinding & Light machining.
- Made from high quality alloy steel.
- Accuracy for Flatness & Parallelism within 0.010mm. / 200L and Squareness 0.012 mm.
- Hardness 60 ± 2 Rc & Tempered.
- Wear Plate at bottom to prevent lifting of Jaw
- Clamping screw with square thread & gun metal nut
- Tenon at bottom to allow easy alignment with machine bed
- **Special size can be Manufactured on request.**
- **We also manufacture stainless steel grinding vice.**

Sr. No.	Cat No.	Size (mm)	Jaw Height (mm)	Opening (mm)
1.	UL-31101	150 L x 50 W x 50 H	22	0 - 70
2.	UL-31102	175 L x 60 W x 55 H	28	0 - 80
3.	UL-31103	190 L x 75 W x 65 H	32	0 - 85
4.	UL-31104	210 L x 95 W x 75 H	38	0 - 100

19 SERIES **UL - 829**

"ULTRA" BRAND GRINDING VICE SCREW TYPE (ECONOMY MODEL)



- Produced of high quality steel, carburized to W surface hardness : HRC 58 - 62.
- Parallelism 0.007mm / 100 mm, squareness 0.015 mm.
- Quickly to clamp and easy to operate.
- Used for precision measurement and inspection precision grinding, EDM and wire - cutting machine.
- **Special size can be Manufactured on request.**

Sr. No.	Cat No.	Size (mm)	Opening (mm)	Jaw Height (mm)
1.	UL-82901	155 L x 50 W x 50 H	0 - 65	25
2.	UL-82902	190 L x 63 W x 65 H	0 - 85	32
3.	UL-82903	210 L x 73 W x 73 H	0 - 100	35
4.	UL-82904	250 L x 88 W x 88 H	0 - 125	40